

The map

Below is the map made with images from May 5 at 11am-12pm. Click on the picture to open a larger image. The second map shows where there is dense smoke on satellite images: the burned areas underneath are estimated only and are more prone to inaccuracies.

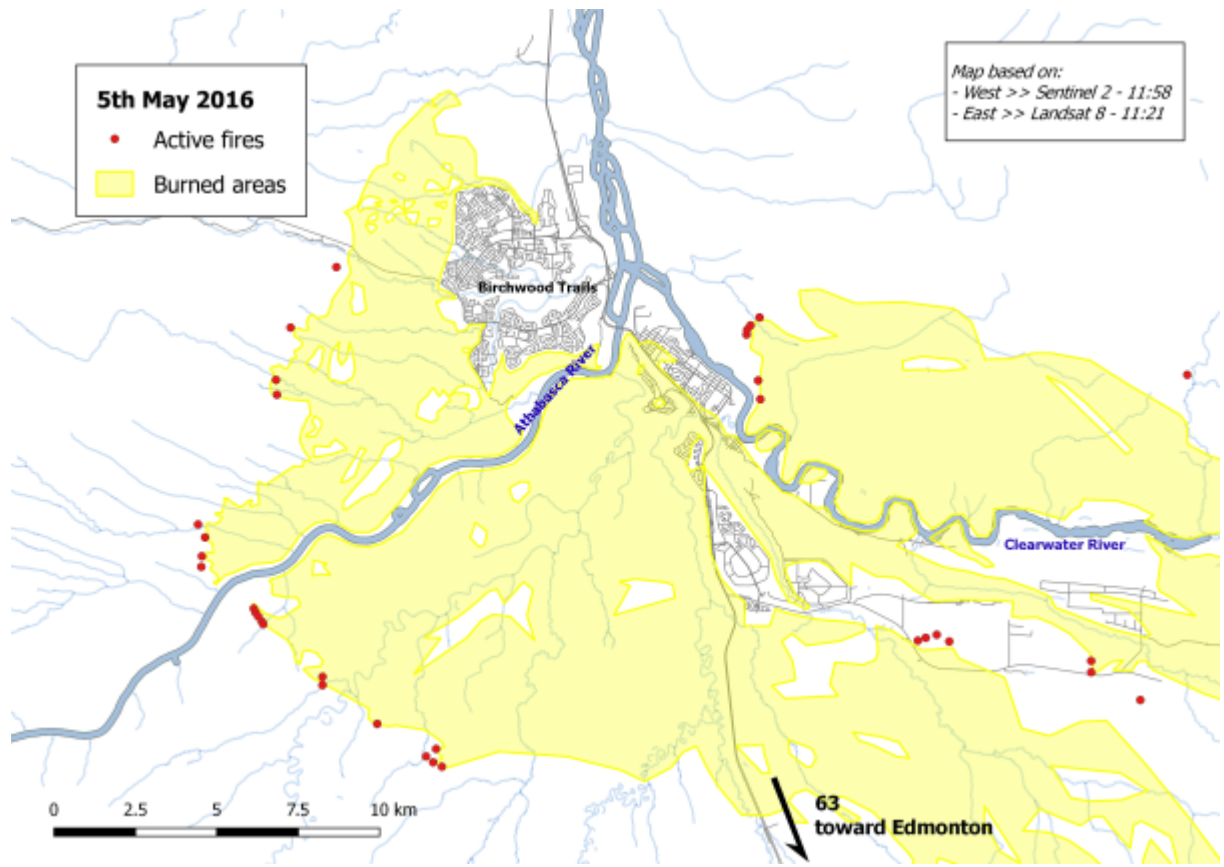
What I have done

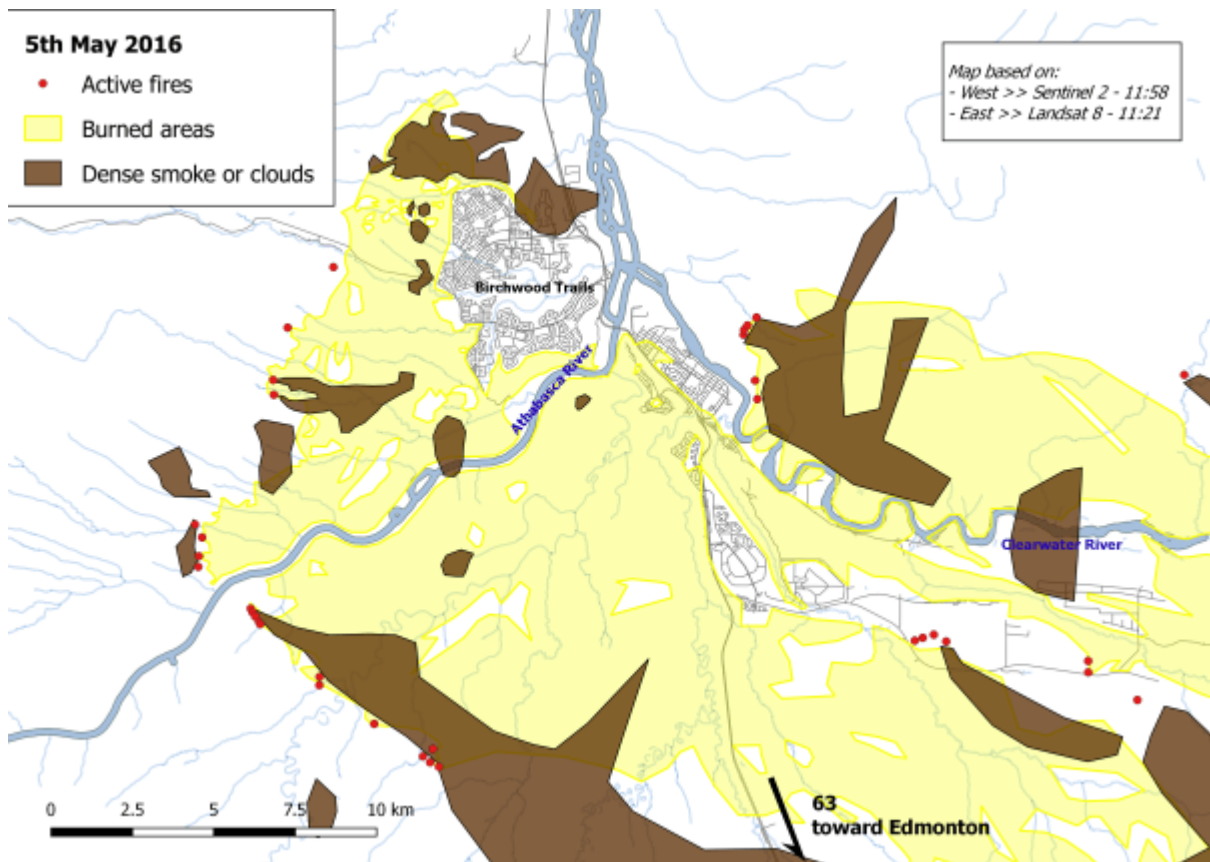
I have used satellite images (Sentinel 2 and Landsat 8) in Near-InfraRed (usually used to monitor vegetation) and visible light to map the extent of the burned areas.

It is difficult to assess the accuracy of the map. There is a lot of smoke, so it's difficult to be sure whether the land underneath is burned. The images I'm using have a resolution of 10-30 m depending on the satellite.

Important

These maps are unofficial and accuracy is not guaranteed. Burned areas are estimated based on the state of vegetation, and they should be considered indicative only. For support and resources for evacuees, please see the [City of Edmonton](#).





Who I am

I'm a PhD student working on glaciers. I have worked with a lot of aerial and satellite images, and know how to read and interpret them. I worked as a land surveyor for 4 years at the French National Mapping Agency (IGN).

I'm French, and just moved 2 weeks ago to Edmonton with my Canadian partner. When we saw the catastrophe in Fort McMurray, we decided to volunteer to help sort donations, but they already had too many pairs of hands. I decided to use my skills to make a map showing the extent of the fire relative to Fort McMurray neighborhoods. I hope this will be useful to complement official reports of damage, so people can see how their part of a neighborhood is affected.

Need for updated images

I have used images freely available to researchers for these maps, however, more recent and higher resolution images are commercially available. I requested the donation of better

images from the USGS Hazard Data Distribution System, who declined. If you can help, please contact me.

With any questions or comments, or requests for more information, please use the contact form below.

Name(required)

Email(required)

Comment(required)

Share this:

- [Click to share on Twitter \(Opens in new window\)](#)
- [Click to share on Facebook \(Opens in new window\)](#)
- [Click to share on Google+ \(Opens in new window\)](#)
- [Click to print \(Opens in new window\)](#)

Like this:

Like Loading...